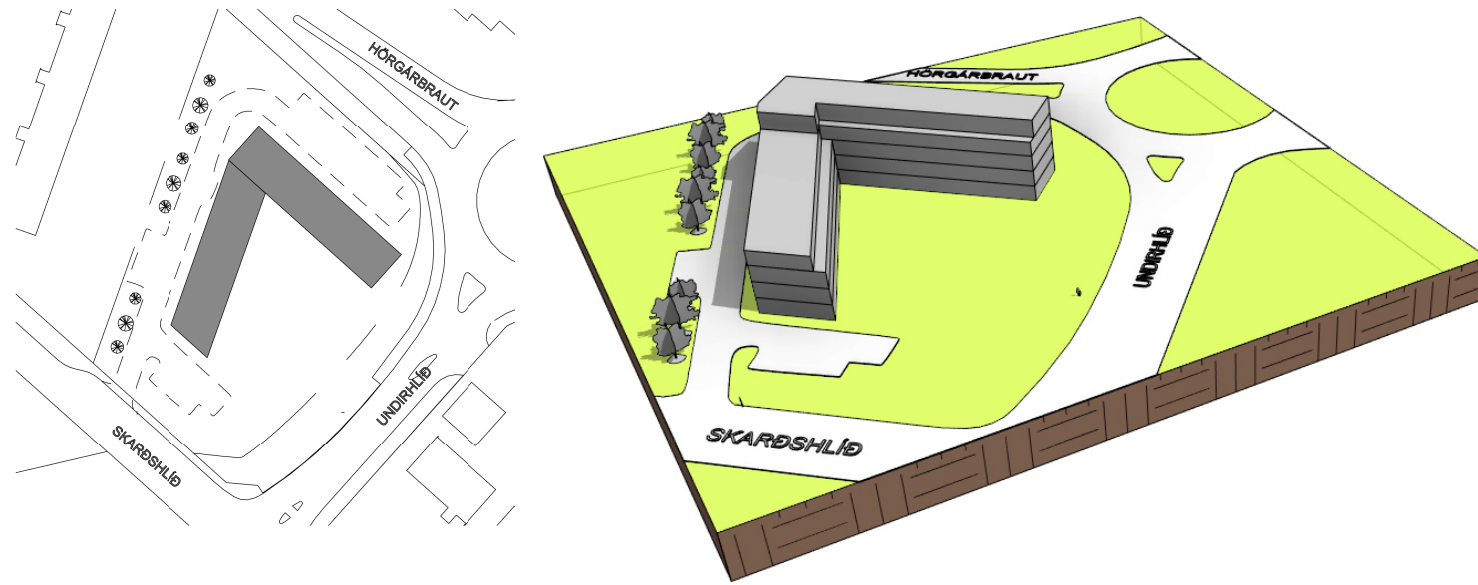
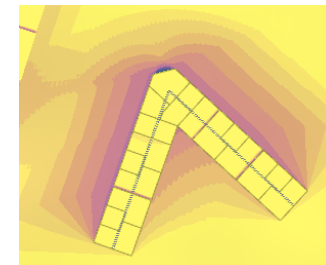


Skarðshlíð- Akureyri

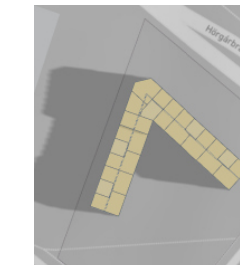
-gróf stúdía sólar og vinds, tillaga A- einn byggingarkroppur



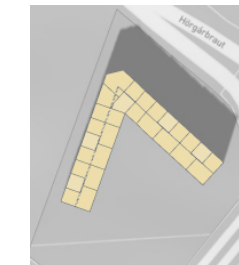
Sólarálag og Skuggavarp



Litir sýna klst af sól yfir
10klst tímabil
1.mái- 08:00-18:00



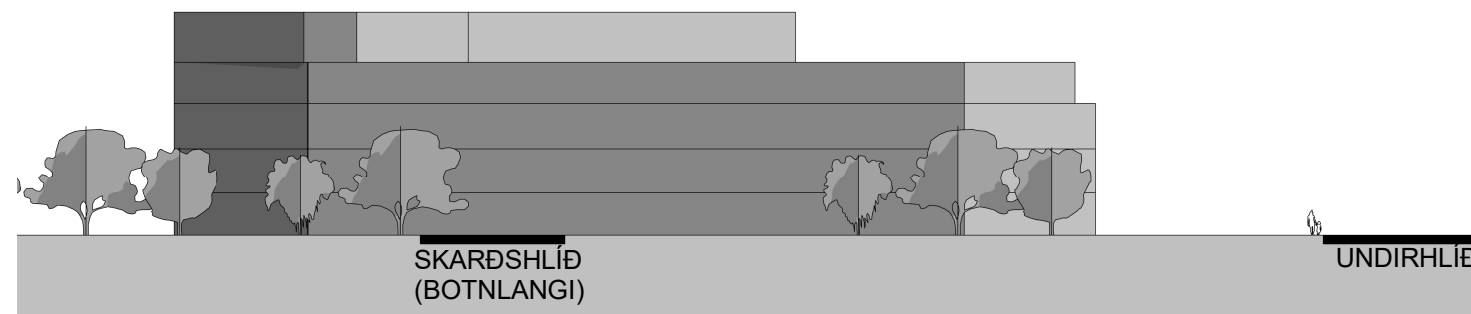
08:00
Skuggavarp



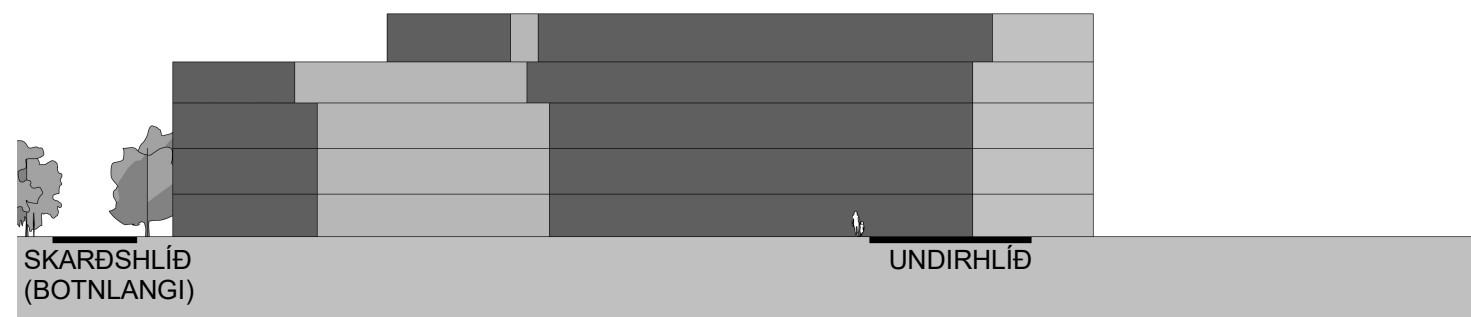
14:00



18:00

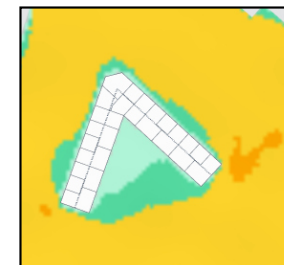


Ásýnd Vestur - frá Skarðshlíð 1:500



Ásýnd Suður - frá gatnamótum Skarðshlíðar og Undirhlíðar 1:500

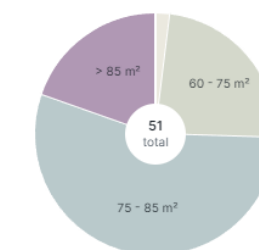
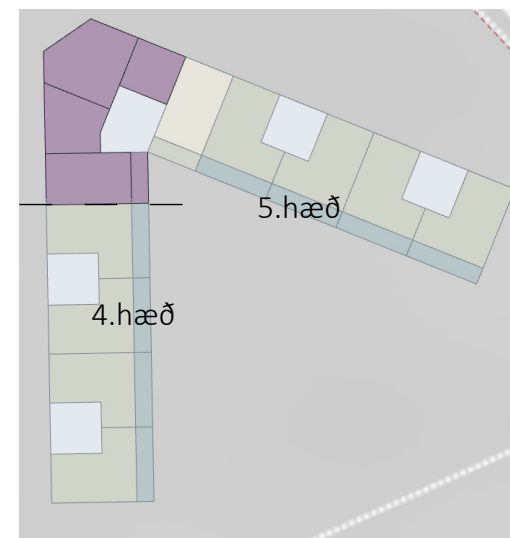
Vindstúdía



Vindálag tekur mið af meðalvind (6m/s)
og ríkjandi suðvestanátt



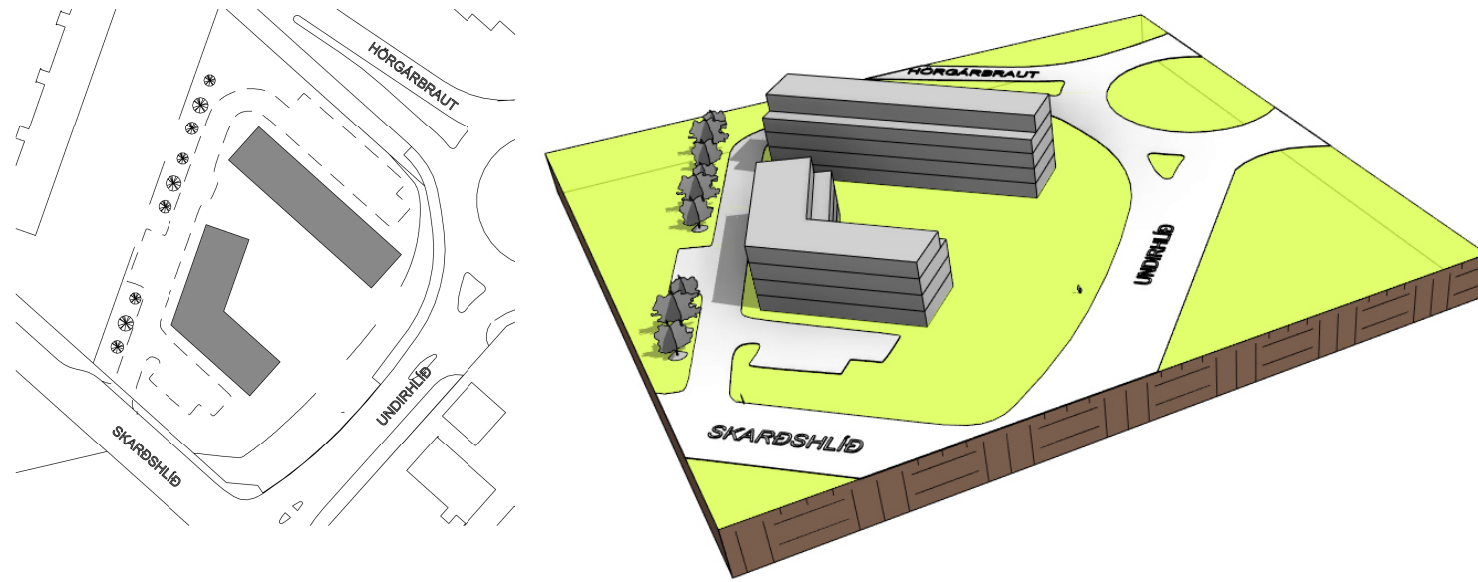
Gróflega áætlaður íbúðarfjöldi.



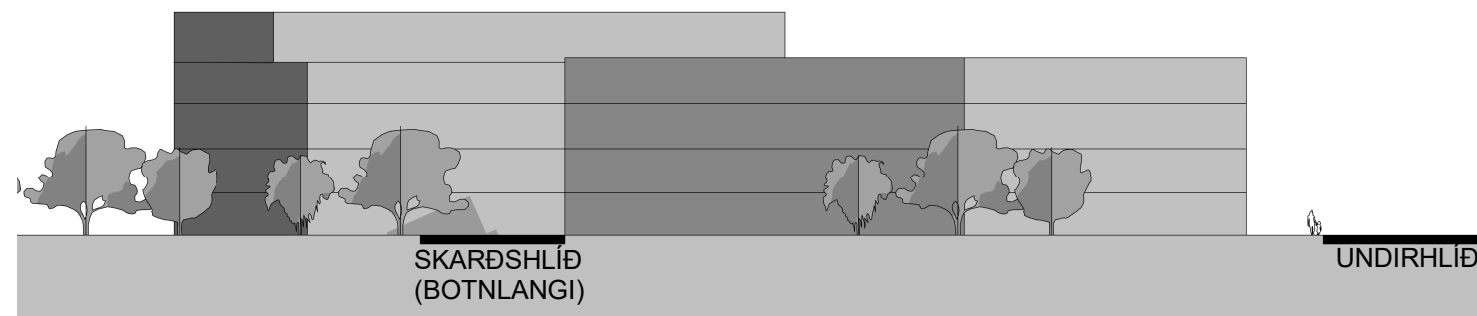
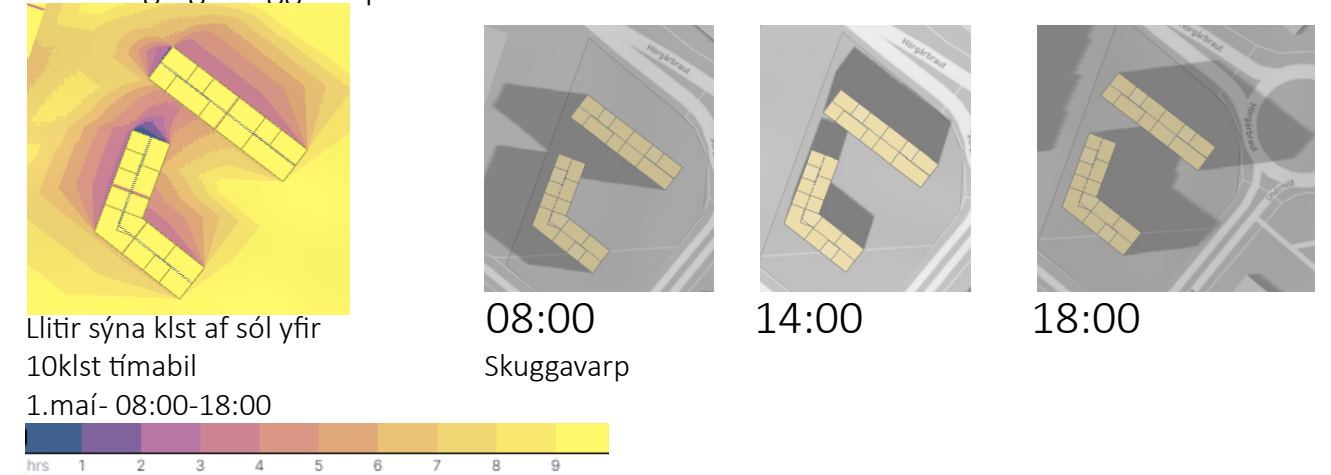
- 40 - 60 m²
1 units - 2%
- 60 - 75 m²
12 units - 29%
- 75 - 85 m²
28 units - 68%
- > 85 m²
10 units - -%

Skarðshlíð- Akureyri

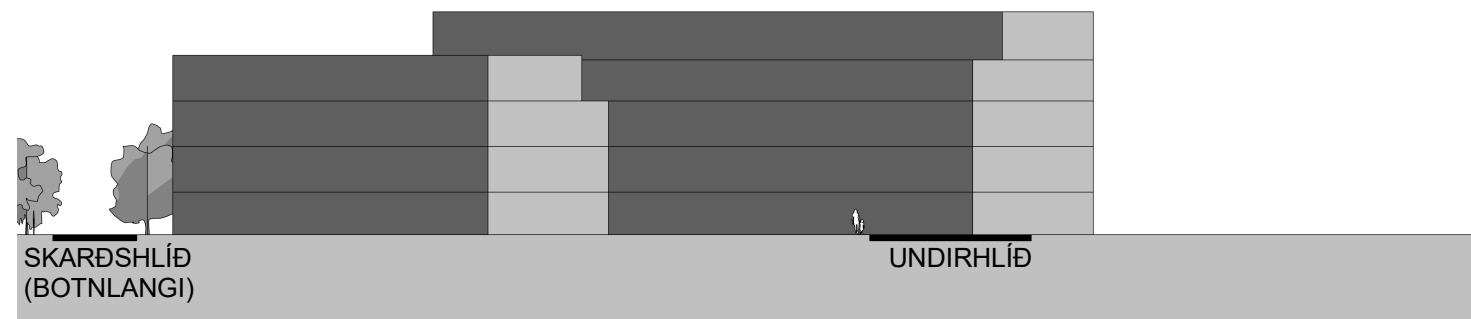
-gróf stúdía sólar og vinds, tillaga B- tveir byggingakroppar



Sólarálag og Skuggavarp

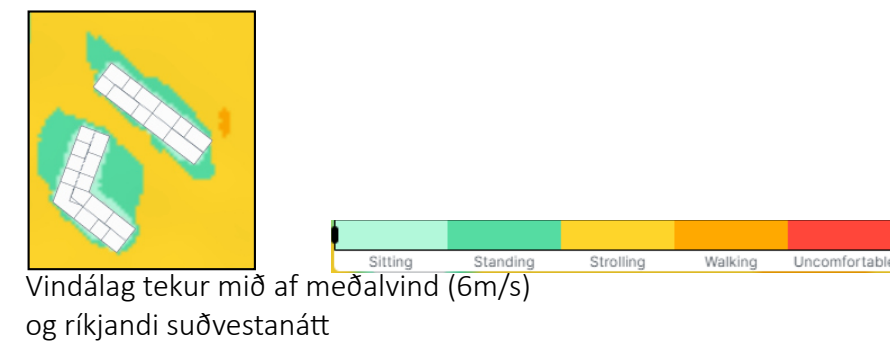


Ásýnd Vestur - frá Skarðshlíð 1:500

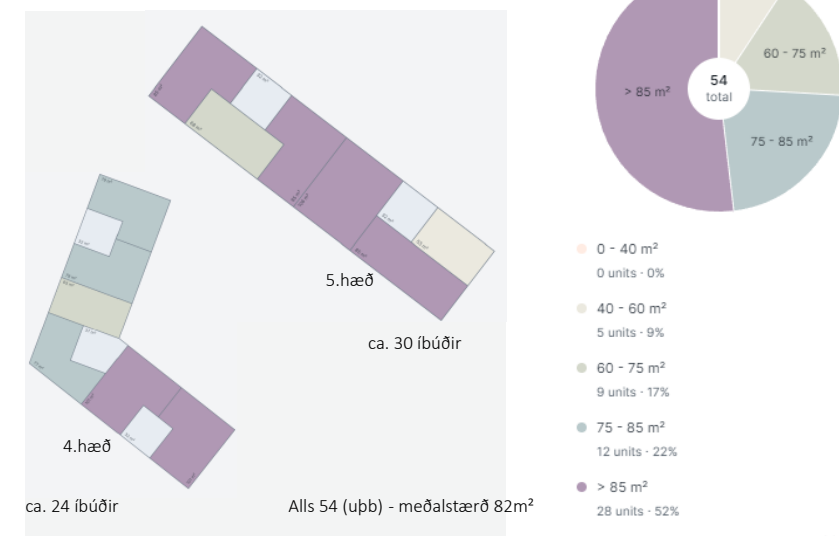


Ásýnd Suður - frá gatnamótum Skarðshlíðar og Undirhlíðar 1:500

Vindstúdía

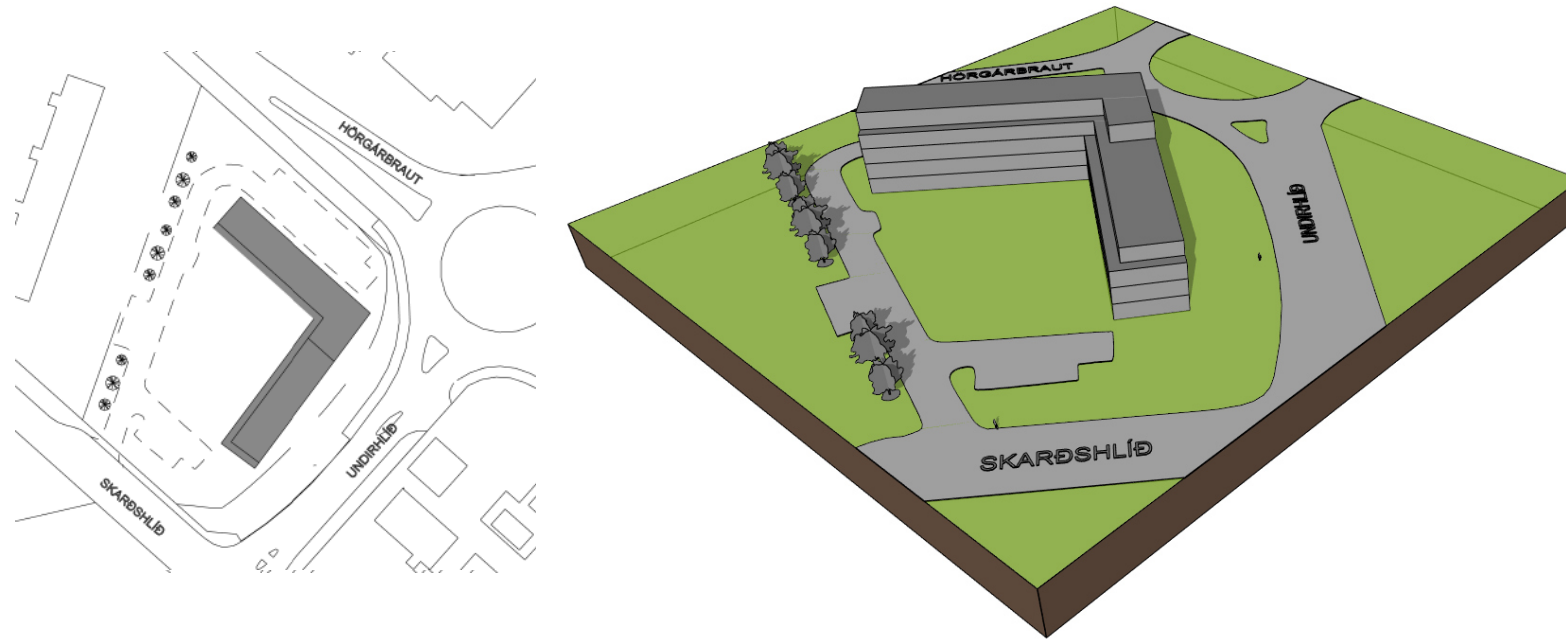


Gróflega áætlaður íbúðarfjöldi.

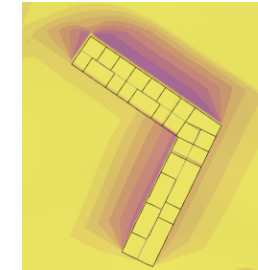


Skarðshlíð- Akureyri

-gróf stúdía sólar og vinds, tillaga C- einn byggingakroppur speglaður



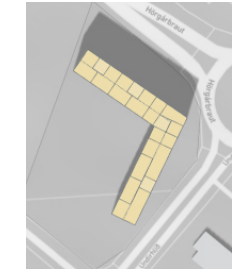
Sólarálag og Skuggavarp



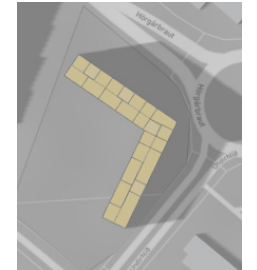
Litir sýna klst af sól yfir
10klst tímabil
1.mái- 08:00-18:00



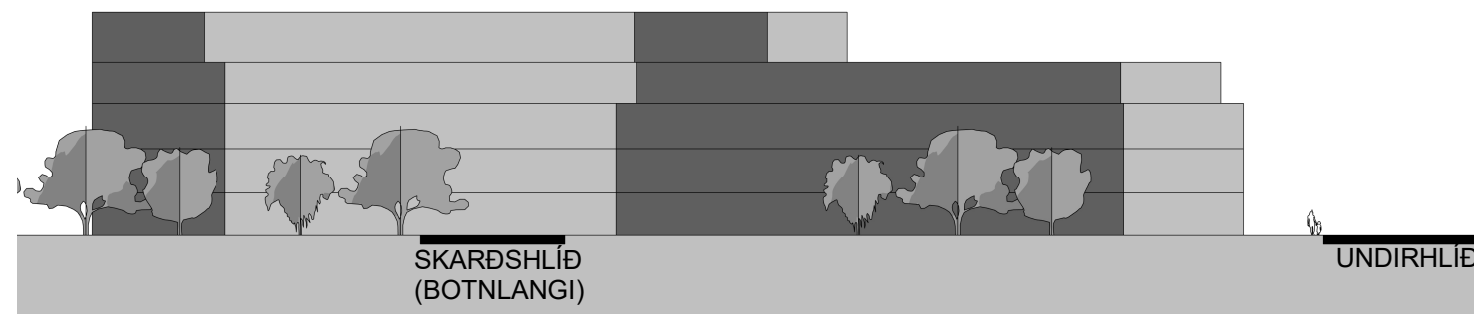
08:00
Skuggavarp



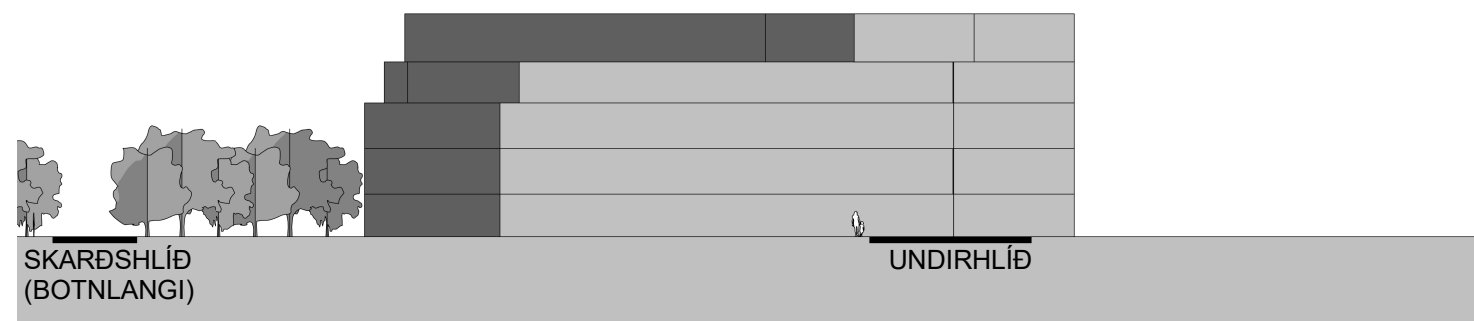
14:00



18:00



Ásýnd Vestur - frá Skarðshlíð 1:500



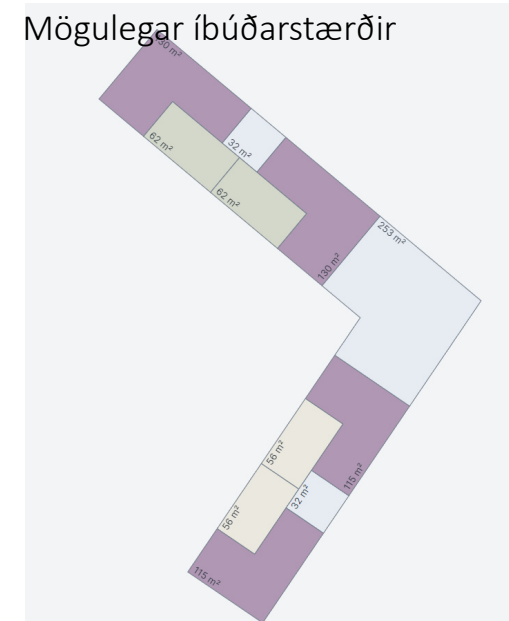
Ásýnd Suður - frá gatnamótum Skarðshlíðar og Undirhlíðar 1:500

Vindstúdía



Vindálag tekur mið af meðalvind (6m/s)
og ríkjandi suðvestanátt

Mögulegar íbúðarstærðir



C.a. 46 íbúðir miðað við að helmingur
íbúða sé yfir 100m²